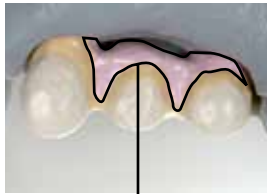


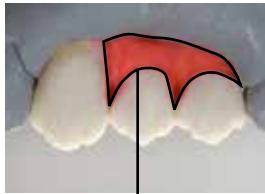
GC Initial™ MC Gum Shades

Additional set for individual gum shading

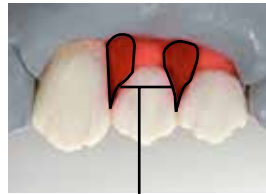
initial[™]
MC Gum Shades



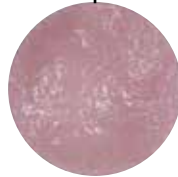
GO-U



GM-24



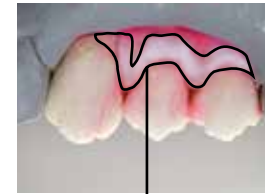
GM-36



GM-34



GM-23



GM-35



Gum Opaque

This is applied and fired together with the tooth-coloured opaque after the wash bake.

Base Dark

These base gum masses are applied after layering the "tooth-coloured" ceramics. The basic mass GM-24 is applied as the bottom, first layer.

Intensive Red

This powder intensifies the areas between the tooth roots. The area of application is rather selective.

Intensive Violet

GM-34 is suitable for extended restorations in the mucogingival fold. It can also be used with dark skin types.

Base Light

The entire gum layering is covered with GM-23. It is a basic powder and essentially regulates the final colour.

Intensive Cream

Then lighter areas of the attached gingiva are reconstructed on the surface. GM-35 can also be applied separately as a correction firing.

The individual steps can be divided between different firings.

Firing schedule analogue to the standard layering technique (see Technical Manual for GC Initial MC).

 **ALPHABOND** dental

Ph: (02) 9417 6660 www.alphabond.com.au