

■ PRODUCTS

Overview & Technical Data



Laboratory



Dental practice



Industry

REITEL is stainless steel – for over 30 years!

REITEL has built its reputation on a commitment to providing quality products made in solid stainless steel for dental laboratories and practices. Stainless steel is resistant to water, steam, humidity as well as weak organic and inorganic acids. It is easy to clean and fulfils all the necessary requirements in connection with rules and regulations on hygiene. Moreover, a compact and elegant design provides intuitive operating elements and rapidly replaceable functional elements.

„Made in Germany“ – International.

All our products are built by hand at our premises in Bad Essen. Thus, we offer not only dental laboratory devices but also specialised products and other specialist items for mechanical engineering, jewellers and conservators. Our products are exported to over 60 countries in the world with a commitment to quality.

We are at your service.

Specialists with excellent knowledge are ready to answer your questions about our „Quality in stainless steel“ products rapidly and efficiently. Our most valuable source is the pool of skilled staff who are always ready to listen to your requests and constructive comments. These, where appropriate, can be incorporated quickly into our production. Our customers and users also benefit from our front-line service support provided by our national and international commercial partners.



Index

■ Cleaning page 4

STEAMY MINI
SUPERSTEAM
TRONADA
DELIMER COMFORT
BIOSTEAM CENTER
STEAM BOWL
SONIRET
ROTOCLEAN EASY
GD PROTOFRESH

■ Tempering page 6

THERMORET

■ Mixing & vibration page 8

RETOMIX EASY
RETOMIX MINI
RETOMIX COMFORT
VIBROMAT

■ Trimming page 10

ROTOGRIND MINI
ROTOGRIND NT
ROTOGRIND NT KFO
GRINDING DISCS

■ Workstation light page 12

LED COMFORT LIGHT
LED MINI LIGHT

■ Polymerisation / Light curing page 13

POLYCURE
POLYMAT

■ Preheating page 14

RETOMAT MINI
RETOMAT
RETOMAT MG

■ Casting page 15

INDURET EASY / COMPACT
RETOCAST I
RETOCAST T
WATER COOLING UNIT

■ Sandblasting page 16

SANDURET
SANDUBLAST

■ Workstations page 18

ERGORET MINI
ERGORET AQUA
ERGORET CC
ERGORET CC KFO

■ Extraction units page 20

DUSTY MINI
DUSTY COMFORT
DUSTY ZIRKON

■ Polishing page 21

POLIRET MINI
POLIRET CLASSIC
POLIRET
POLIRET TWIN

■ Accessories page 22

» POLYCURE light curing device –
to be found on page 13

Cleaning



» Luer-Lock connector with steam brush for external cleaning



» clean and hygienic evaporation with the BIOSTEAM CENTER



STEAMY MINI
Steam cleaner

- » ideal for small laboratories and multi-user applications
- » fast temperature and pressure build-up due to integrated tank heating
- » insulated, ergonomic steam gun
- » optional nozzles and brushes available (see page 22)



SUPERSTEAM
Steam cleaner

- » large capacity tank
- » dry/wet steam for cleaning, hot water spray jet for wax removal
- » steam pressure; variable quantity and moisture
- » compressed air function
- » pressure gauge
- » easy manual filling and one-hand operation
- » optional nozzles and brushes available (see page 22)



TRONADA
Steam cleaner

- » refilling is automatic
- » especially suitable for large dental laboratories
- » dry/wet steam for cleaning, hot water spray jet for wax removal
- » steam pressure; variable quantity and moisture
- » pressure gauge
- » optional nozzles and brushes available (see page 22)



DELMER COMFORT
Water descaling device

- » descales tap water
- » perfect accessory for the TRONADA and other automatically filled steam cleaners
- » no time-consuming cartridge replacement required due to ion exchange principle
- » with optional water tap for manually fillable steam cleaners

ADVICE!



For all manually fillable steam cleaners we recommend the REITEL descaler. So your device remains permanently lime-free!

TECHNICAL DATA	STEAMY MINI	SUPERSTEAM	TRONADA	DELMER COMFORT
Line voltage	230 V / 50 – 60 Hz	230 V / 50 – 60 Hz	230 V / 50 – 60 Hz	230 V / 50 – 60 Hz
Water pressure	***	***	max. 4 bar	max. 3 bar
Current consumption	1.200 W	2.200 W	3.200 W	100 W
Dimensions (W x H x D)	33 x 28 x 33 cm	30 x 42 x 35 cm	33 x 42 x 35 cm	43,5 x 33 x 29,5 cm
Weight	8 kg	14 kg	15 kg	11 kg
Temperature	150 °C	160 °C	160 °C	***
Pressure	4,5 bar	6 bar	6 bar	***
Capacity	3,5 l	5 l	5 l	approx. 1,5 l / min
Moisture + quantity	fix	variable	variable	***
Filling	manual	manual	automatic	automatic
Order-No.	10904000	14201000	10101000	10205000



The REITEL steam cleaners are perfectly suitable for cleaning all dental objects. Dirt that occurs in the laboratory daily e.g. greases, waxes or stubborn adhesions, can easily be removed without affecting the object itself. Environmentally safe due to no chemicals being required.

Thanks to the heating element inside the tank, you can reach the required temperature and pressure level in a very short time,

allowing for quick and efficient steam cleaning. The robust steam cleaners are equipped with various safety features, so you will enjoy long time reliable operation. The ergonomically shaped steam gun ensures comfortable work.

The steam cleaners are available in different sizes as well as performance levels – depending on targeted application and space requirements.



BIOSTEAM CENTER
Steam center

- » any occurring condensation is automatically extracted into a special filter
- » special triple filter system binds any contamination
- » free view when evaporating
- » no basin required
- » incl. bright LED lighting
- » can be set up anywhere in the laboratory



STEAM BOWL
Steam bowl

- » ideal for laboratories with limited space
- » clean working environment
- » keeps the work place free from steam, contamination and wax residues
- » convenient cleaning
- » robust stainless steel quality



ADVICE! The REITEL stainless steel spray helps you to remove dirt from your device in seconds. Just spray the stainless steel surface with the spray prior to the first use to provide a protective film against impurities. The protective film can be renewed by a few sprays.

TECHNICAL DATA	BIOSTEAM CENTER	STEAM BOWL
Line voltage	230 V / 50 – 60 Hz	***
Current consumption	200 W	***
Dimensions (W x H x D)	54 x 60 x 51 cm	ø 32 x H 27 cm
Weight	35 kg	2,5 kg
Order-No.	10106000	10110000

■ Cleaning – in a dental practice



SONIRET
Ultrasonic cleaning unit

- » effective cleaning of tools and instruments
- » for optimised cleansing results in places which are difficult to access
- » easy handling
- » extensive accessories
- » hygienic thanks to stainless steel surface



ROTCLEAN EASY
Brush cleaning for instruments

- » quick and easy pre-cleaning of instruments
- » avoids injuries and contact with germs
- » brushes easy to remove and can be disinfected and sterilised up to 50 times
- » unit can be directly installed in the basin



ADVICE! Suitable for the SONIRET ultrasonic cleaning device, various metal or plastic insert trays as well as beakers and insert baskets can be supplied. Comprehensive information can also be found as from page 22.

TECHNICAL DATA	SONIRET	ROTCLEAN EASY
Line voltage	230 V / 50 – 60 Hz	230 V / 50 – 60 Hz
Current consumption	200 W	30 W
Dimensions (W x H x D)	28 x 21 x 19 cm	35 x 16 / 35 x 27 / 17 cm
Tank-Dimensions (W x H x D)	24 x 10 x 14 cm	***
Weight	4,5 kg	6 kg
Capacity	3 l	2,7 l
Order-No.	10200000	10300000



GD PROTOFRESH
Denture cleaner

- » high cleaning performance due to left and right rotation
- » individually adjustable timing via digital timer
- » infinitely variable speeds up to 3,000 rpm
- » incl. beaker
- » cleaner with 4 mm or 6 mm needles

« in cooperation with
 GEORGE DENTAL

TECHNICAL DATA	GD PROTOFRESH
Line voltage	230 V / 50 – 60 Hz
Current consumption	150 W
Speed	approx. 3.000 rpm
Dimensions (W x H x D)	22,5 x 23,5 x 22,5 cm
Beaker dimensions (ø x H)	10 x 8 cm
Weight	7 kg
Capacity	approx. 0,6 l
Order-No.	10500000



» dental instruments can be quickly and effectively cleaned with the ROTCLEAN EASY

Tempering



The THERMORET is used to heat thermoplastic materials (e.g. composites) become more fluid and easier to process. Practical work steps, such as the creation of a wax centric or functional impressions on full dentures, are thus considerably simplified. This saves strength, time and nerves – both for you and your patients. Even anaesthetics and instruments can be pre-warmed

using the THERMORET to the benefit of the patient during dental treatment!

Included in delivery is a stainless steel box for heating of registries. A separate water bath for processing wax plates etc. is therefore no longer necessary. You can simply remove the box for disinfection and sterilization.



THERMORET

Syringe / Composite warmer

- » pleasant effect for the patient through preheated anesthesia, bite registration, etc.
- » mirrors are kept fog free by heating
- » materials are easier to process
- » precise and stable temperature setting
- » box sterilisable with the thermodisinfectant

ADVICE! We recommend placing a suitably cut tray pad on the bottom of the water tank. It prevents materials from sticking to the bottom when placed in the water. The cleaning of the container is thereby significantly easier.

TECHNICAL DATA	THERMORET
Line voltage	230 V / 50 – 60 Hz
Current consumption	180 W
Dimensions (W x H x D)	22 x 13,5/18 x 23 cm
Weight	5,5 kg
Temperature	max. 70 °C
Capacity	0,8 l
Order-No.	16002000



Mixing

The RETOMIX devices are constantly in motion, stainless steel is the ideal robust material for granting longevity. Convenient cleaning is another decisive benefit. Easy application reduces downtime and increases productivity.

Please consult our catalogue or website for information on accessories such as the high quality mixing bowls for the RETOMIX vacuum mixing devices, available in different sizes and with different paddles.



RETOMIX EASY

Vacuum mixing device

- » easy mixture of plaster, investment material and alginates
- » no compressed air connection required thanks to integrated vacuum pump
- » integrated, easily exchangeable filter system
- » wall mounted, incl. 400 ml mixing bowl



RETOMIX MINI

Vacuum mixing device

- » precise mixing of plaster, investment material and alginates with digital timer
- » variable speed
- » no compressed air connection required due to integrated vacuum pump
- » integrated, easily exchangeable filter system
- » wall mounted, incl. 400 ml mixing bowl



RETOMIX COMFORT

Vacuum mixing device

- » interval controlled mixing process with up to 99 programs
- » speed control independent of load
- » no compressed air connection required thanks to integrated vacuum pump
- » integrated, easily exchangeable filter system
- » wall mounted, incl. 400 ml mixing bowl

TECHNICAL DATA	RETOMIX EASY	RETOMIX MINI	RETOMIX COMFORT
Line voltage	230 V / 50 – 60 Hz	230 V / 50 – 60 Hz	230 V / 50 – 60 Hz
Current consumption	420 W	420 W	420 W
Dimensions (W x H x D)	15,5 x 29 x 28,5 cm	15,5 x 29 x 28,5 cm	15,5 x 29 x 28,5 cm
Dimensions incl. stand (W x H x D)	22 x 71 x 36 cm	22 x 71 x 36 cm	22 x 71 x 36 cm
Weight	8 kg	8 kg	8 kg
Weight incl. stand	15 kg	15 kg	15 kg
Speed	fix 330 rpm	variable 370 – 630 rpm	variable 150 – 600 rpm
Vacuum	max. 93 %	max. 93 %	max. 93 %
Order-No.	10606000	10607000	10608000

75ml mixing bowl
Order-No.: 2130210

150ml mixing bowl
Order-No.: 2130200
Alginates: 26306000

400ml mixing bowl
Order-No.: 21303000
Alginates: 26307000

600ml mixing bowl
Order-No.: 21304000

1.000ml mixing bowl
Order-No.: 21213000



» electronic timer and speed display of the RETOMIX MINI



» bubble-free and homogeneous results by use of the VIBROMAT

In order to achieve a perfect result and to offer the patient an optimal solution, this device must not be missing during the dental workflow: the VIBROMAT! Thanks to this device, plasters

or investment materials become homogeneous and bubble-free. The strong performance and stability are the „nuts and bolts“ when working with the vibrator.



VIBROMAT Vibrator

- » controllable intensity
- » two variable frequencies
- » suction rubber feet provide a firm footing and absorb the movement
- » easy removable and washable rubber tray
- » incl. lateral vibration support

TECHNICAL DATA	VIBROMAT
Line voltage	230V / 50 – 60 Hz
Current consumption	150W
Dimensions (W x H x D)	30 x 12,5 x 17 cm
Weight	6 kg
Frequencies / min.	3.000 and 6.000
Intensity	continuously adjustable
Order-No.	14002000

Trimming

» ROTOGRIND NT with large opening for trimming

The ROTOGRIND trimmer is available in three versions: The MINI version as a pure wet trimmer is perfectly suited for small laboratories. The ROTOGRIND NT with disc rinsing technology is well-equipped as both wet and dry trimmer for all applications and is also available as an orthodontic version. All trimmers include a smooth-running, carbon brush-free motor which

ensures – combined with high-quality grinding discs – an optimal grinding pattern. Even at a speed of 3.000 rpm, a high level of stability is ensured thanks to the robust stainless steel housing. The front covers can easily be removed by special quick releases for convenient cleaning, fulfilling hygienic standards.



ROTOGRIND MINI
Wet trimmer



ROTOGRIND NT
Wet-/dry trimmer



ROTOGRIND NT KFO
with orthodontic angulation table



ADVICE! The front covers of the ROTOGRIND trimmers can easily be removed by special quick releases to ensure easy cleaning and replacement of grinding discs.

- » perfectly suited for laboratories with limited space thanks to its compact design
- » robust stainless steel housing ideally absorbs movements
- » adjustable table
- » front cover can easily be removed by two special quick releases for easy cleaning and fast changeable discs
- » powerful brushless motor without carbon

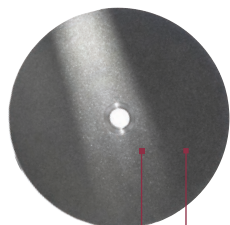
- » operation switchable from wet to dry
- » incl. automatic wet disc rinsing technology. Motor stops immediately if the housing is opened
- » table can be fixed at any angle
- » hinged and removable front cover with quick release provides easy cleansing and replacement of grinding discs
- » especially designed for fully coated diamond discs

- » perfectly suited for grinding precise angles onto maxillary and mandible models
- » extra large grinding disc opening
- » smooth axial movement
- » variable angle adjustment with locking positions
- » if the table is not needed, it can easily be removed from the work area
- » optional laser guide

TECHNICAL DATA	ROTOGRIND MINI	ROTOGRIND NT	ROTOGRIND NT KFO
Line voltage	230 V / 50 – 60 Hz	230 V / 50 – 60 Hz	230 V / 50 – 60 Hz
Current consumption	1.300 W	1.500 W	1.500 W
Dimensions (W x H x D)	31 x 31 x 40 cm	35 x 35 x 47 cm	35 x 35 x 47 cm
Weight	20 kg	22 kg	22 kg
Speed	3.000 rpm	3.000 rpm	3.000 rpm
Disc diameter	25 cm	25 cm	28 cm
Order-No.	13400000	10301000	43305000 (Set)

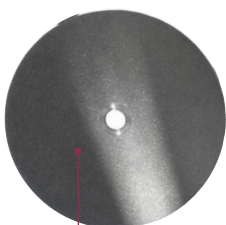


for ROTOGRIND NT / KFO



**DIAMOND,
FULLY COATED**

medium coating,
backing disc in
stainless steel
Diameter: 25 cm
Weight: 2,25 kg
Order-No.: 20302000



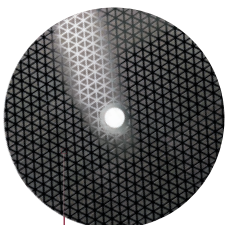
**DIAMOND,
FULLY COATED**

rough coating,
backing disc in
stainless steel
Diameter: 25 cm
Weight: 2,15 kg
Order-No.: 20303000

**DIAMOND, FULLY COATED,
FOR ORTHODONTIC USE**

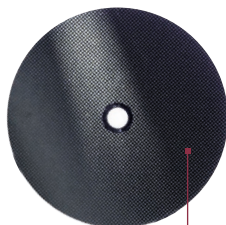
medium coating,
backing disc in stainless steel
Diameter: 28 cm
Weight: 2,65 kg
Order-No.: 20309000

for ROTOGRIND NT and ROTOGRIND MINI



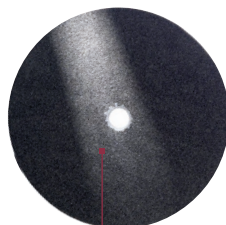
**„PW“: DIAMOND,
PARTIALLY COATED**

mounted points, backing disc
made of synthetic material
Diameter: 25 cm
Weight: 0,5 kg
Order-No.: 23301000



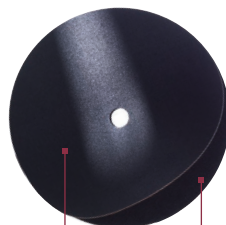
**„DELTA“: DIAMOND,
PARTIALLY COATED**

triangle segmented,
aluminium backing disc
Diameter: 25 cm
Weight: 0,75 kg
Order-No.: 23401000



SILICON CARBIDE

medium coating on both
sides, backing disc not
necessary
Diameter: 25 cm
Weight: 0,55 kg
Order-No.: 20301000



CORUNDUM DISC

K80, Velcro disc
Diameter: 25 cm
Weight: 0,05 kg
Order-No.: 22205000

**BACKING DISC
FOR CORUNDUM**

with Velcro fastener,
made of aluminium
Diameter: 25 cm
Weight: 0,65 kg
Order-No.: 22204000



ADVICE! For orthodontic dental technicians, we recommend the ROTOGRIND NT with an orthodontic front. In addition to the reliable wet / dry function, this trimmer version has an extra large grinding disc opening. You can also easily edit your models using the stable – yet flexible – angulation table.

ADVICE! For dust extraction during the optionally used dry function, we recommend the DUSTY COMFORT wet and dry extraction unit for the ROTOGRIND NT / KFO. You will find more information about our extractors on page 20.



Workstation light

» LED WORKSTATION LIGHTS with self-explanatory control panels

Besides the optically appealing design, the REITEL workstation lights provide excellent luminosity and thus the best view on your working environment. An extremely lightweight design is also appealing. A diversion of the light rays with more than 100.000 microlenses ensures a homogeneous light distribution and

reduces shadows and reflections on objects. Both the light color (daylight: 6.500 K / warm light: 3.000 K) as well as the brightness are individually adjustable by use of a dimmer. Settings that are frequently used can be saved in three memory locations or recalled at the push of a button.



Order-No.: 19110000

LED COMFORT LIGHT
wall assembly set



Order-No.: 19100000

LED MINI LIGHT
wall assembly set



Order-No.: 19111000

LED COMFORT LIGHT
table installation set



Order-No.: 19101000

LED MINI LIGHT
table installation set

- » homogeneous light for test workstations
- » reflections on object surfaces are reduced to a minimum
- » true color reproduction (Ra value: 90)
- » infinitely dimmable in brightness and color temperature
- » three memory locations for preferred settings
- » extremely lightweight design with aluminum housing
- » optionally with practical wall mounted folding arm

- » adjusting screw allows flexible mounting, e.g. on a tabletop
- » movable in almost every direction and in each angle via five pivot points
- » articulated arm and lamp made of extremely lightweight aluminum
- » optimal light for working at a test station
- » true color reproduction (Ra value: 90)
- » infinitely dimmable in brightness and color temperature
- » three memory locations for preferred settings

TECHNICAL DATA	LED MINI LIGHT	LED COMFORT LIGHT
Line voltage	48 V / 50 – 60 Hz	48 V / 50 – 60 Hz
Current consumption	24 W	48 W
Dimensions (W x H x D)	30,4 x 3,1 x 19,8 cm	56,4 x 3,1 x 19,8 cm
Weight / incl. adjustable arm	0,65 kg / 1,45 kg	1,75 kg / 2,55 kg
Light color / R _a value	white, adjustable / > 90	white, adjustable / > 90
Angle of radiation	approx. 60°	approx. 60°
Illumination 0,5 m	2.510 Lux	4.650 Lux
Illumination 1,0 m	664 Lux	1.322 Lux
Illumination 1,5 m	320 Lux	617 Lux
Order-No. / incl. table installation set	19100000 / 19101000	19110000 / 19111000



ADVICE! In case of limited space work flexibility is guaranteed by the practical wall mounted folding arm available as an accessory.

Swing-arm, Order-No.: 29100000

Polymerisation / Light curing

REITEL offers you two methods for polymerising your workpieces, such as occlusal splints, dentures or individual impression trays. Only by use of this process you achieve the desired medical solution for the patients. For hot or cold curing products we recommend the POLYMAT polymerisation unit, conveniently accommodating articulators or multiple cuvettes.

A maximum temperature of 120 °C (standard: 100 °C) and pressure up to 6 bar ensure the desired hardness and stability of your product. For work that requires a light cured resin or plastic, we offer an additional device, called POLYCURE. Several workpieces can be polymerised simultaneously, characterised by optimal curing conditions as well as generous space on a rotary disc.

ADVICE! A sturdy basket construction is included with which you can easily remove your finished polymerised work out of the hot water.



POLYMAT

Pressure and heat polymerisation unit

- » dental articulators or several flasks can be polymerised simultaneously
- » rapid pressure build-up
- » electronic temperature control
- » heating process can also be started when the lid is open
- » various safety features
- » heating unit placed outside the stainless steel tank

TECHNICAL DATA	POLYMAT
Line voltage	230 V / 50 – 60 Hz
Current consumption	1.100 W
Dimensions (W x H x D)	33/62 x 33 x 38 cm
Inner dimensions tank	ø 22 x H 19 cm
Weight	22 kg
Temperature	max. 100 °C
Capacity	7 l
Pressure	max. 6 bar
Order-No.	18301000



POLYCURE

Light curing device

- » three light frequencies for different materials
- » durable high-performance LEDs
- » wide access area and free movement thanks to hinged lid
- » generously dimensioned rotary disc
- » individually adjustable time with a digital timer
- » integrated inner chamber ventilation prevents overheating of your workpieces

The POLYCURE light curing device is designed for materials in the field of dental technology and 3D printing. It cures resin and plastics within a short time.

TECHNICAL DATA	POLYCURE
Line voltage	230 V / 50 – 60 Hz
Current consumption	30 W
Wavelength	385 – 390 / 405 – 410 / 465 – 470 nm
Dimensions (W x H x D)	21 x 21/44 x 33,5 cm
Rotary disc	ø 12,5 cm
Weight	5,5 kg
Order-No.	18310000

Preheating

» enough space can be found for several casting rings in the RETOMAT furnaces

The RETOMAT is designed for preheating and elimination of wax and castable resin. The series includes three furnaces with different capacities, so you can place several large casting rings simultaneously. The devices can be heated up to 1.150 °C allowing the required preheating temperature for every material. Together with one of the REITEL casting machines, you will

achieve optimum casting results – regardless of whether using precious or non-precious metal. Choose between vacuum pressure casting or the classic flame casting centrifuge. Of course, all devices are equipped with an extremely sturdy housing made of high-quality stainless steel. We are glad to assist you while making your choice.



RETOMAT MINI
Laboratory furnace



RETOMAT
Laboratory furnace



RETOMAT MG
Laboratory furnace



- » especially designed for precious and non-precious alloys and model casting
- » choose from three chamber sizes - to suit your needs and the most commonly required casting ring dimensions
- » heating rate of max. 15 °C / min. (max. 900 °C / h), maximum temperature of 1.150 °C
- » heating elements on four sides ensure fast and even distribution as well as temperature compensation after opening the flap
- » optimal chamber insulation

- » EASY controller allows simple use (alternatively **COMFORT** controller)
- » incl. ceramic insert plate and ventilation fan adaptor
- » optional extractor for reduction of odours and smoke through catalytic afterburning of furnace gases
- » convenient accessories available, e.g. casting ring drawer for hot casting rings (see accessories as from page 23)

ADVICE! Optionally, every model of the RETOMAT series is also available with the **COMFORT** controller. This offers precise temperature control with programmable parameters of temperature speed and hold times; up to 30 heating ramps, speed program and calendar function.

COMFORT controller,
Order-No.: 27300000



» the furnace door can be opened upwards

TECHNICAL DATA	RETOMAT MINI	RETOMAT	RETOMAT MG
Line voltage	230V / 50 – 60 Hz	230V / 50 – 60 Hz	230V / 50 – 60 Hz
Current consumption	2.500 W	2.600 W	3.000 W
Dimensions (W x H x D)	39 x 53/61 x 45 cm	42 x 55/66 x 43 cm	45 x 57/71 x 52 cm
Heating room dimensions (W x H x D)	16,5 x 11,5 x 15 cm	20,5 x 13 x 19 cm	23,5 x 15,5 x 25 cm
Capacity	3,2l	5,2l	9,2l
Number of casting rings (example)	4 x size 3	4 x size 6	4 x size 9
Weight	32 kg	43 kg	48 kg
Order-No.	17404000	17405000	17406000



INDURET EASY / COMPACT
Vacuum pressure casting

- » gentle melting of the metal by individual generator power control
- » pre-melting of alloys is possible, but often not necessary
- » high pressure ensures a homogeneous and cavity free structure
- » connection to the water circuit or the optional water cooling unit

INDURET COMPACT:

- » optional temperature control included



RETOCAST I
Induction casting centrifuge

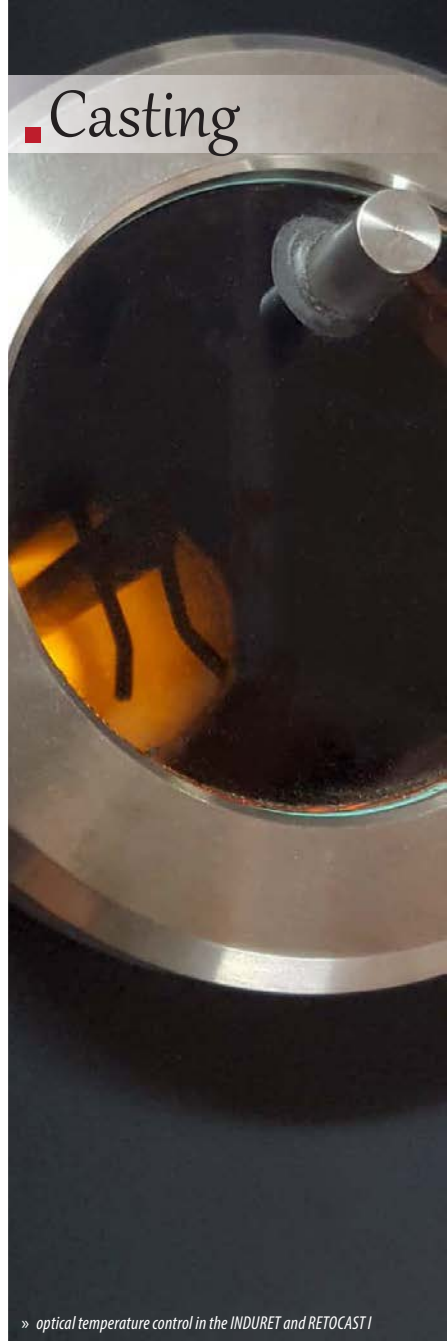
- » perfectly suited for model casting by combination of centrifuge and vacuum pressure casting
- » for precious and non-precious metals and model casting
- » safe and reliable casting process
- » three different starting speeds
- » including automatic lowering of the induction coil
- » easy handling



RETOCAST T
Flame casting centrifuge

- » reliable technology and easy operation
- » for precious and non-precious metals and model casting
- » also for gypsum bonded investment
- » choose from three different speeds for optimal casting results
- » lid opens automatically
- » individual accessories for flame casting available

TECHNICAL DATA	INDURET EASY	RETOCAST I	RETOCAST T
Line voltage	230 V / 50 – 60 Hz	230 V / 50 – 60 Hz	230 V / 50 – 60 Hz
Current consumption	3.600 W	3.200 W	500 W
Dimensions (W x H x D)	35 x 39 x 65 / 73 cm	74 x 53 / 93 x 51 cm	71 x 35 / 80 x 55 cm
Weight	38 kg	60 kg	44 kg
Air / argon pressure	5 – 6 bar	***	***
Water pressure	3 – 4 bar (5 l / min.)	***	***
Speed	***	500 rpm	500 rpm
Casting ring size	1 – 9 and model casting	1 – 9 and model casting	1 – 9 and model casting
Capacity	noble metal 110 g non-precious metal 55 g	noble metal 110 g non-precious metal 55 g	noble metal 130 g non-precious metal 60 g
Temperature measurement	min. 15 g (in the molten alloy)	***	***
Temperature	max. 1.600 °C	***	***
Order-No.	13802000	18000000	10502000



» optical temperature control in the INDURET and RETOCAST I



ADVICE! For the RETOCAST T, a wide range of accessories is available – from extra-deep crucibles for higher quantities to the practical gas economiser.



WATER COOLING UNIT
for induction casting machines

TECHNICAL DATA	WATER COOLING UNIT
Line voltage	230 V / 50 – 60 Hz
Current consumption	150 W
Dimensions (W x H x D)	45 x 35 x 58 cm
Weight	12 kg
Capacity	40 l
Max. pump capacity	10 l / min.
Order-No.	23807000

- » makes induction casting machines independent of the water connection ensuring low water consumption
- » with brushless pump for continuous operation
- » incl. temperature display and contamination filter

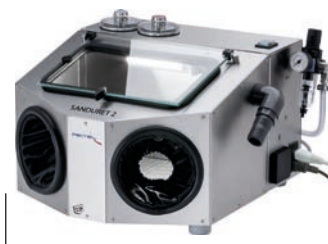
Sandblasting

» nozzles for the SANDURET and SANDUBLAST sandblasters are available in four different measurements

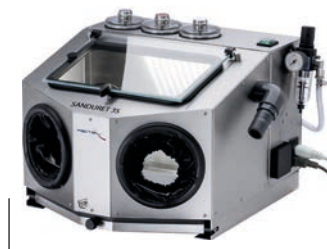
The REITEL sandblasters allow you to choose between many different options, depending on the desired application: recycling sandblaster, microfine sandblaster or a combination of both? Two, three or four chambers?

With both the SANDURET and the SANDUBLAST, you get a high-quality device made of sturdy stainless steel, with leather

gauntlets and a high blasting performance to achieve optimum results. Cleaning, buffing, and polishing as well as removing oxide layers from different surfaces is comfortably activated via foot pedal. The built-in quick stop ensures precise and economic use of abrasives. Water separators and filters avoid unnecessary maintenance and keep downtime low.



SANDURET 2
Microfine sandblaster



SANDURET 3
Microfine sandblaster



SANDURET 4
Microfine sandblaster

ADVICE! For our SANDURET and SANDUBLAST series we recommend the ERGOLIFT as a practical accessory. The flexible lifting table, variable between 10 and 60 cm, can bring your sandblaster to a comfortable working height at any time.

ERGOLIFT, Order-No.: 25000000

- » choose between two, three or four chambers for different grain sizes
- » incl. foot switch and economical, maintenance-free quick-stop valve
- » selector switch in chamber allows for quick change of abrasive
- » heated chambers offer a constant flow of the abrasive
- » refillable at any time by quick air release valve
- » freedom of movement thanks to ultra-flexible hoses

- » integrated LED interior lighting and breathable leather gauntlets ensure comfortable work
- » included nozzle removes abrasive material from the object by use of air pressure
- » upper extraction adaptor on the side of the unit provides optimal visual conditions and glass protection
- » water separator and filters avoid unnecessary maintenance and keep downtime to a minimum
- » optional drawer unit permits fast removal of abrasive material



TECHNICAL DATA	SANDURET 2	SANDURET 3	SANDURET 4
Line voltage	230V/50–60Hz	230V/50–60Hz	230V/50–60Hz
Current consumption	100 W	120 W	140 W
Dimensions (W x H x D)	48 x 32 / 48 x 44 cm	48 x 32 / 48 x 44 cm	48 x 32 / 48 x 44 cm
Weight	17 kg	18 kg	19 kg
Air consumption	approx. 80l/min.	approx. 80l/min.	approx. 80l/min.
Pressure	0,5–6 bar	0,5–6 bar	0,5–6 bar
Nozzles	1,2 + 1,5 mm	0,8 + 1,2 + 1,5 mm	0,8 + 1,2 + 1,5 + 1,5 mm
Particle size	25–250 µm	25–250 µm	25–250 µm
Order-No.	14601000	14600000	14603000



SANDUBLAST

Recycling sandblaster

- » optimal freedom of movement due to generous blasting chamber
- » durable nozzle can be fixed at any angle
- » safety glass panel with protective foil
- » integrated LED interior lighting and breathable leather gauntlets
- » footswitch operation



SANDUBLAST 2

Recycling and microfine sandblaster

- » saves space and time in the laboratory by combining recycling and microfine sandblaster in one device
- » high blasting pressure
- » available with two or three chambers
- » operation by footswitch
- » recycling blasting material is reused several times



SANDUBLAST 3

Recycling and microfine sandblaster

- » maintenance-free REITEL quick-stop valve
- » heated chambers offer a constant flow of the abrasive
- » selector switch in chamber allows quick change of abrasive
- » freedom of movement through ultraflexible hoses
- » nozzle can be fixed at any angle of inclination

TECHNICAL DATA	SANDUBLAST	SANDUBLAST 2	SANDUBLAST 3
Line voltage	230 V / 50 – 60 Hz	230 V / 50 – 60 Hz	230 V / 50 – 60 Hz
Current consumption	100 W	100 W	120 W
Dimensions (W x H x D)	48 x 36 / 55 x 44 cm	48 x 36 / 55 x 44 cm	48 x 36 / 55 x 44 cm
Weight	13 kg	17 kg	18 kg
Air consumption	approx. 80 l / min.	approx. 80 l / min.	approx. 80 l / min.
Pressure	***	0,5 – 6 bar	0,5 – 6 bar
Pressure blaster	max. 6 bar	max. 6 bar	max. 6 bar
Nozzles	***	1,2 + 1,5 mm	0,8 + 1,2 + 1,5 mm
Particle size	50 – 250 µm	25 – 250 µm	25 – 250 µm
Order-No.	14604000	14605000	14606000

ADVICE! The REITEL sandblasters' interior hoses are extremely flexible, so that you can easily reach every corner of the blasting chamber. The carbide nozzles ensure particularly precise blasting results.



■ Workstations



» comfortable and healthy working
in the ERGORET workstations

The REITEL ERGORET multifunctional workstations are designed to facilitate daily laboratory tasks while protecting your health. The product name derives from its ergonomic design. All devices are multi-purpose and include almost every tools that should be within the reach of dental and orthodontic technicians such as integrated magnifying glasses, drawers, anti-slip rubber mats and a container for coarse waste. The ERGORET workstations

are accurately built by hand – from safety glass cover down to the wood panel. You will enjoy the ERGORET workstation as a valuable multifunctional tool over a long period of time in your dental laboratory.

The Vario lift table is additionally available, with a variability of up to 300 mm in working height.



ERGORET AQUA
Workstation

- » trimming and cutting under wet conditions, where protection for health and clothes is required
- » especially useful when processing zirconium dioxide
- » stainless steel housing with large glass cover
- » incl. waterproof LED lighting and fittings to connect to the water supply or to an extractor

ADVICE! The ERGORET AQUA offers an optimum view of your workpiece through its large glass cover. The magnifying glass with suction cups can easily be attached to the glass cover, enabling the user to take a much closer look at details. It can of course be removed without residues.

Magnifying glass, Order-No.: 20280000



TECHNICAL DATA	ERGORET AQUA
Line voltage	230V / 50 – 60 Hz
Current consumption	26 W
Dimensions (W x H x D)	46 x 26 / 50 x 43 cm
Weight	8 kg
Order-No.	16900000



» magnifying glass can be attached by applying light pressure



ERGORET MINI
Table top workstation

- » compact design while protecting your health thanks to the protective glass cover and ergonomically formed wood base
- » dust and gases are extracted directly
- » universal adapter permits connection to any extraction system front or rear
- » incl. bright, energy-efficient LED lighting
- » optional magnifying glass



» Fig. with optional Vario-lift table

ERGORET CC
Workstation

- » multifunctional ergonomic workstation, offering best conditions to minimise strain and tiredness
- » the integrated extraction system extracts dust, gases and vapors directly to a filter
- » additional adaptor for external extraction
- » can also be used for quality control or as inspection unit
- » optional Vario-lift table



» Fig. with optional Vario-lift table

ERGORET CC KFO
Workstation

- » ideal workstation for orthodontic purposes in dental practices and laboratories
- » detrimental waste, dust and methyl methacrylate vapors are safely extracted directly to a large, integrated activated carbon filter
- » additional adaptor for external extraction
- » can also be used for quality control or as inspection unit
- » optional Vario-lift table



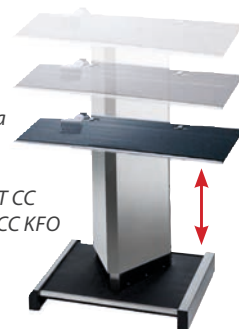
» each of our workstations is hand-made

TECHNICAL DATA	ERGORET MINI	ERGORET CC	ERGORET CC KFO
Line voltage	230V / 50 – 60Hz	230V / 50 – 60Hz	230V / 50 – 60Hz
Current consumption	18 W	120 W	120 W
Dimensions (W x H x D)	49 x 30 x 40 cm	91 x 67 x 86 cm	48 x 55 x 44 cm
Weight	14 kg	60 kg	18 kg
Magnifying glass	4 diopters, optional	4 diopters	4 diopters
Compressed air	***	max. 8 bar	***
Filter	***	***	activated carbon filter
Order-No.	16801000	14803000 (white) / 14803010 (grey)	14805000 (white) / 14805010 (grey)

ADVICE!

The Vario lift table allows you to work in a standing or sitting position at the ERGORET CC and ERGORET CC KFO workstations.

Order-No.:
24800000



■ Extraction units

You are sure to find the right product for your laboratory within our range of DUSTY extraction units. No matter if you have a small practice laboratory or a CAD/CAM-specialized dental laboratory – with the extraction units from REITEL you will safely get rid of dust and contaminants. They ensure dust collection of up to 99.99% from your working environment. The DUSTY extractors also have an adaptor that allows you to connect the hosing to any other device. We recommend to connect the extractors to our sandblasters, trimmers and workstations.



DUSTY MINI
Dry extractor

- » dust-free dirt removal when trimming or sandblasting
- » extremely quiet with enormous extraction power
- » perfectly suited for small labs due to small dimensions
- » the multi-fit adapter allows connection of the extraction hose to various devices
- » 60 l/sec. extraction power
- » 5-ply fleece filter bag



DUSTY COMFORT
Wet / dry extractor

- » especially suited for medium dust particles (plaster and abrasives)
- » extremely efficient due to the particularly large container volume
- » extra socket for tool and automatic on/off
- » the multi-fit adapter allows connection of the extraction hose to various devices
- » extra protection by fine dust filter cartridge



DUSTY ZIRKON
Fine dust extractor

- » ideal for extraction of zirconium dioxide during CAD/CAM applications
- » extremely low working sound level
- » multi-fit adapter allows flexible connection of the extraction hose to various devices
- » extra socket for tools, automatic on/off
- » incl. quick and easy filter cleaning function

ADVICE!



The DUSTY extractors are suitable for any REITEL device requiring an extraction unit – e.g. the SANDURET.

TECHNICAL DATA	DUSTY MINI	DUSTY COMFORT	DUSTY ZIRKON
Line voltage	230 V / 50 – 60 Hz	230 V / 50 – 60 Hz	230 V / 50 – 60 Hz
Current consumption	700 W	1.300 W	1.200 W
Socket	***	max. 1.500 W (auto)	2.400 W
Dimensions (W x H x D)	29 x 40,5 x 40 cm	36 x 59 x 40 cm	39 x 61 x 57 cm
Weight	5 kg	7 kg	16 kg
Dust collection	95 % (class M)	95 % (class M)	99,9% (class H)
Working sound level	73 dB(A)	70 dB(A)	60 dB(A)
Container volume	13 l	30 l	42 l
Order-No.	12900000	17902000	24500000



Polishing



» changeable filters in the POLIRET devices

The POLIRET range offers economic and precise grinding, polishing, cleaning and brushing of metal, plastic and ceramic objects. All POLIRET polishing units are suitable for pumice and include at least one storage tray and perfect LED work area lighting. The safety glasses and other decisive features provide

the highest level of operating safety. The compact polishing unit POLIRET MINI with one spindle requires very little space. It lacks nothing compared to our larger polishing units. We recommend using the convenient Vario-lift table offering ergonomic and individual height adjustment.



POLIRET MINI
Polishing unit

- » especially suitable for laboratories with limited space
- » infinitely variable speed up to 4.500 rpm
- » integrated extraction with upwards air exhaust
- » washable, easy change fleece filter (class M)
- » incl. bright LED lighting
- » removable polishing troughs



POLIRET CLASSIC
Polishing unit

- » basic model with two-speed motor
- » two separately adjustable extraction channels
- » easy change fleece filter, machine wash at 40°C (class M)
- » the polishing troughs can easily be removed for cleaning
- » incl. LED work area lighting
- » protective glass



POLIRET
Polishing unit

» Fig. with optional speed display

- » absolutely flexible polishing unit – especially suitable for large dental laboratories
- » extremely powerful integrated extraction – two separately adjustable extraction channels
- » exhaust air is directed upwards
- » infinitely variable speed up to 4.500 rpm
- » generous storage areas for polishing discs etc.



POLIRET TWIN
Polishing unit

- » incl. bright LED lighting
- » swivel sight / safety glasses
- » easy change fleece filter, machine wash at 40°C
- » the polishing troughs can easily be removed for cleaning
- » optional speed display
- POLIRET TWIN:**
- » one motor per side – speeds can be controlled independently

TECHNICAL DATA	POLIRET MINI	POLIRET CLASSIC	POLIRET	POLIRET TWIN
Line voltage	230V / 50 – 60Hz	230V / 50 – 60Hz	230V / 50 – 60Hz	230V / 50 – 60Hz
Motor power	600 W	400 W	550 W	2x 370 W
Extraction power	115 W	190 W	400 W	400 W
Dimensions (W x H x D)	53 x 43 x 40 cm	73 x 50 x 56 cm	73 x 50 x 56 cm	73 x 50 x 56 cm
Weight	24 kg	60 kg	60 kg	60 kg
Speed	1.000 – 4.500 rpm	1.500 / 3.000 rpm (fix)	270 – 4.500 rpm	2x 270 – 4.500 rpm
Extraction capacity	500 m³/h	600 m³/h	800 m³/h	800 m³/h
Order-No.	11100000	11111000	10328000	12703000

ADVICE!

Work in standing or sitting position thanks to the Vario lift table suitable for all REITEL polishing units.

Order-No.:
24900000



■ Accessories

Specialities

We offer useful accessories for nearly every device available in our comprehensive portfolio in order to simplify your work processes with your REITEL appliances, such as the VARIO-lift table, complementing the ERGORET workstations. The list of accessories also includes products for daily use – such as the REITEL stainless steel care spray for convenient cleansing of your appliances.

Replacements, such as filter bags for the DUSTY vacuum cleaners, grinding discs or melting crucibles are also found in the accessories list.

If you cannot find a particular item, do not hesitate to contact our service team (hotline: +49 54 72/94 32-32, e-mail: service@reitel.com) or our national or international commercial partners.



Article

Order number

OUR PERSONAL RECOMMENDATIONS

REITEL Spray, 250 ml	
Conditioning spray for stainless steel.....	90405000
REITEL Descaler, 1.000 ml	
based on phosphoric acid.....	90410000
Hand pump for descaling	20121000

STEAMY MINI, SUPERSTEAM, TRONADA – page 4

Wall-mounted shelf.....	20107000
DELIMER COMFORT (page 4).....	20200000
BIOSTEAM CENTER (page 5).....	10106000
STEAM BOWL (page 5).....	10110000
Luer-Lock connector	20118000
Nozzle for Luer-Lock connector, 15 mm	20116000
Tool for changing the nozzle.....	20119000
Steam brush Luer-Lock for external cleaning	20112000
Steam brush Luer-Lock for internal cleaning, 25 cm	20113000
Steam brush Luer-Lock for internal cleaning, 50 cm	20114000

DELIMER COMFORT– page 4

Water tap	20201000
-----------------	----------

BIOSTEAM CENTER – page 5

Activated carbon filter	20109000
-------------------------------	----------

SONIRET – page 6

Insert tray, stainless steel.....	20400000
Insert tray, plastic	20401000
Beaker positioning cover, stainless steel.....	20403000
Glass beaker	20402000
Insert basket, plastic	20405000
Insert basket, stainless steel.....	20404000

ROTOCLEAN EASY – page 6

Cleaning brush-set	20300000
Hard cleaning brushes.....	20299000
Cleaning brush on the front	20295000
Magnifying glass with suction cups (page 18).....	20280000

RETOMIX – page 8

Stand made of stainless steel with a granite base.....	23701000
Mixing bowl 75 ml	21302100
Mixing bowl 150 ml	21302000
Mixing bowl 150 ml (for alginates).....	26306000
Mixing bowl 400 ml.....	21303000
Mixing bowl 400 ml (for alginates)	26307000
Mixing bowl 600 ml.....	21304000
Mixing bowl 1.000 ml.....	21213000
VIBROMAT (page 9)	14002000

ROTOGRIND MINI – page 10

Grinding discs according to selection on page	page 11
---	---------

ROTOGRIND NT UND ROTOGRIND NT KFO – page 10

Grinding discs according to selection on page	page 11
LED working lamp	20306000
Laser Guide	20308000
DUSTY MINI (page 20 – only for dry operation)	12900000
DUSTY COMFORT (page 20 – only for dry operation).....	17902000

WORKSTATION LIGHT – page 12

Swing-arm for wall mounting	29100000
-----------------------------------	----------

Article	Order number
---------	--------------

POLYMAT – page 13

120 °C temperature extension.....	28300000
-----------------------------------	----------

RETOMAT – page 14

COMFORT control panel.....	27300000
Catalyst	27301000
Steam ventilator.....	27302000
Casting ring drawer	27303000

INDURET – page 15

Starter Package for INDURET	23811000
Maintenance unit.....	23809000
Pressure reducer argon	21601000
Crucible holder.....	23806000
Graphite crucible Plus for precious alloy.....	23801200
Graphite crucible for precious alloy	23801000
Ceramic crucible, non-precious alloy	23803000
Sigradur crucible.....	23800000
Graphite stop rod.....	23802000
Ceramic stop rod S.....	23804000
Longlife stop rod.....	23812000
Graphite crucible holder	23805000
Thermocouple	23814200
Milling tool for crucible outlet	23816000
Alloy chute.....	23818000
Positioning pliers.....	23819000
Centering and isolation rings.....	26803000
Dosage tube.....	23828000

RETOCAST I – page 15

Ceramic crucibles for non-precious alloys	28001000
Graphite insert for precious alloys.....	28002000
Water cooling unit (page 23)	23807000

RETOCAST T – page 15

Melting kit propane / oxygen	20501000
Melting kit natural gas / oxygen	20518000
Melting device for noble metal and non-precious metal, propane.....	20506000
Melting device for noble metal, natural gas	20506100
Gas economiser for propane / oxygen.....	20502000
Gas economiser for natural gas / oxygen.....	20512000
Torch handle propane	20514000
Torch handle natural gas.....	20514100
Universal insert propane / oxygen	20507000
Universal insert natural gas / oxygen	20507100
Solder insert, 0,5 mm nozzle, propane	20503000
Solder insert, 1 mm nozzle, propane	20504000
Mikroflam propane, incl. 3 precision needles for soldering	20505000
Mikroflam natural gas, incl. 3 precision needles for soldering.....	20505100
Solder insert propane, with 3 changeable nozzles	20516000
Solder insert, natural gas, with 3 changeable nozzles	20516100
Melting crucibles normal.....	20509000
Melting crucibles extra deep	20510000

SANDURET – page 16

DUSTY MINI (page 20).....	12900000
DUSTY COMFORT (page 20)	17902000
Drawer (for sand extraction)	24603000
Blasting nozzle 0,6 mm	24598000
Blasting nozzle 0,8 mm	24599000
Blasting nozzle 1,2 mm.....	24600000
Blasting nozzle 1,5 mm.....	24601000
ERGOLIFT, manually adjustable work table.....	25000000

Article	Order number
---------	--------------

SANDUBLAST – page 16

DUSTY MINI (page 20).....	12900000
DUSTY COMFORT (page 20)	17902000
Blasting nozzle 0,6 mm	24598000
Blasting nozzle 0,8 mm	24599000
Blasting nozzle 1,2 mm.....	24600000
Blasting nozzle 1,5 mm.....	24601000
ERGOLIFT, manually adjustable work table.....	25000000

ERGORET AQUA – page 18

ERGOLIFT, manually adjustable work table.....	25000000
---	----------

ERGORET MINI – page 19

Magnifying glass, 4 diopters	23205000
DUSTY MINI (page 20).....	12900000
Automatic on/off.....	22902000
Extraction adapter for several brands	23203000
ERGOLIFT, manually adjustable work table.....	25000000

ERGORET CC & ERGORET CC KFO – page 19

Noble metal filter.....	24806000
Protection lamellae	23206000
Activated carbon filter	23101000
DUSTY MINI (page 20).....	12900000
DUSTY COMFORT (page 20)	17902000
Vario-lift table	24800000

DUSTY MINI – page 20

Filter bags 5 pcs./pack.	22905000
Automatic on/off.....	22902000
Fleece filter basket.....	on request

DUSTY COMFORT – page 20

Filter bags 5 pcs./pack.	27905000
2-way extraction port	27801000
Filter cartridge.....	on request
Connection adapters for various devices	on request
Automatic on/off.....	22902000

DUSTY ZIRKON – page 20

Filter bags 5 pcs./pack.	27804000
Automatic on/off.....	22902000

POLIRET – page 21

without extraction (for connection to a central extraction)	on request
Filter bags 1 pc./pack., for POLIRET MINI	22702100
Filter bags 2 pcs./pack., for POLIRET CLASSIC.....	22702200
Filter bags 2 pcs./pack., for POLIRET, - TWIN	22702000
Vario-lift table	24900000
Speed display.....	22604000

REITEL Feinwerktechnik GmbH

Senfdamm 20 · 49152 Bad Essen · Germany

Phone: +49 (0) 54 72 / 94 32-0 · Telefax: +49 (0) 54 72 / 94 32-40

Internet: www.reitel.com · E-Mail: info@reitел.com

